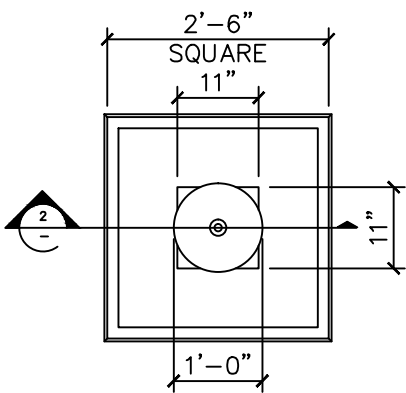
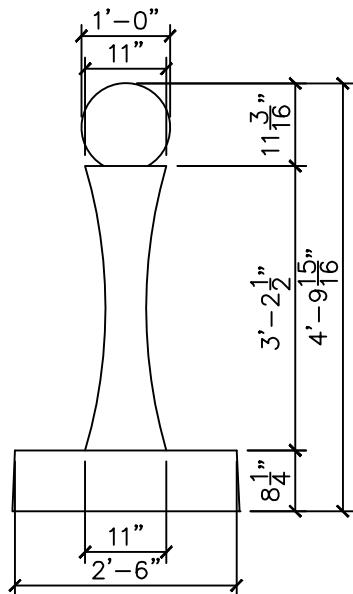


PARTS LIST

ITEM NO	COMPONENT	PART NO.	DESCRIPTION	MANUFACTURER	QTY	REMARKS
1	FOUNTAIN	-	38-1/2" H x 11"W x 11"L I FOUNTAIN - GFRC	GIST	1	COLOR OPTIONAL
2		-	30"W x 30"L x 8-1/4"D BASE - GFRC	GIST	1	COLOR OPTIONAL
3		-	12" DIA BALL - GFRC	GIST	1	COLOR OPTIONAL
4	TUBING	-	3/4" DIA PVC COUPLER SOCKET END	GIST	2	COLOR OPTIONAL
5		-	1/2" DIA x 2'-11"LG PVC PIPE PLAIN END	-	1	PRE-INSTALLED
6		-	1/2" DIA VINYL TUBE	-	1	PRE-INSTALLED
7	PARTS BAG	A115	3/4"x1/2" DIA PVC CONCENTRIC REDUCER SOCKET END	-	2	
8		A115	5/8" ID X 24" VINYL TUBE	-	1	
9		A115	1/2" DIA PVC BALL VALVE	-	1	
10		A115	5/8" I.D. x 10"LG TUBING - CLEAR VINYL PLAIN END	-	1	
11		A115	SHIM PLASTIC	EZ - SHIM	6	
12	PUMP	-	MODEL 1.9 - PT505, 225 GPH SUBMERSIBLE PUMP	JEBAO	1	



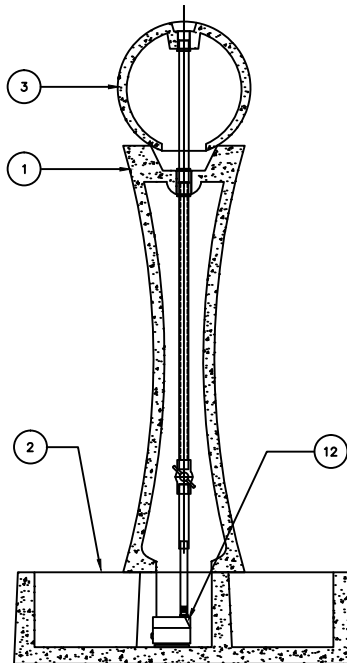
1 PLAN VIEW
SCALE: 1/2"=1'



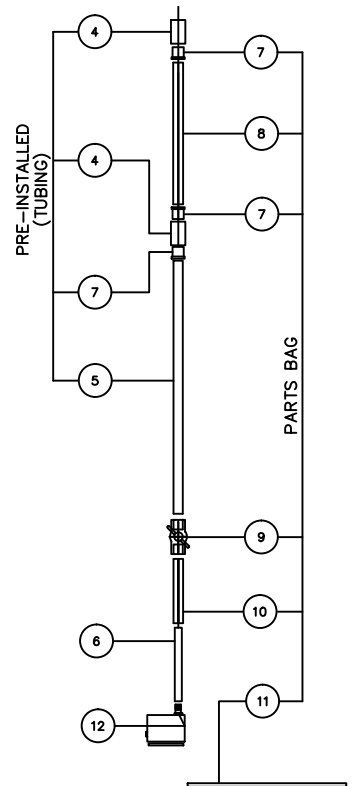
2 ELEVATION
SCALE: 1/2"=1'



3 ASSEMBLY
SCALE: N.T.S.



4 SECTION
SCALE: 3/4"=1'



5 PIPE ASSEMBLY
SCALE: 3/4"=1'

NOTE:

Electrical supply must conform with local & national regulation/codes. If in doubt consult an electrician.
To ease connections hot water may be used to soften PVC tubing. Pump and plumbing details may vary.
Precautions should be taken to prevent damage from water freezing in reservoir.



I FOUNTAIN MINI WITH BALL

PRODUCT
MINI I WITH BALL
DRAWING DATE
07-18-07

DWG NO. / SKU:
IIIF - BALL - MINI
SHEET NO. 1 OF 1