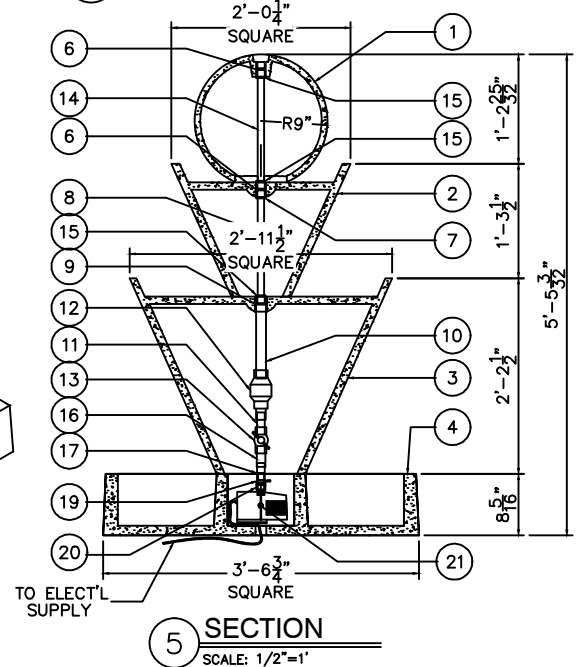
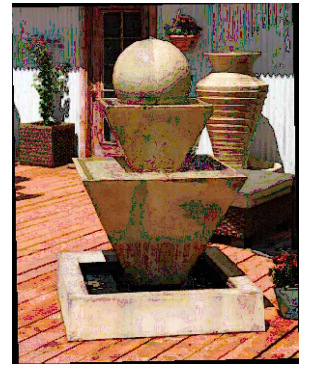
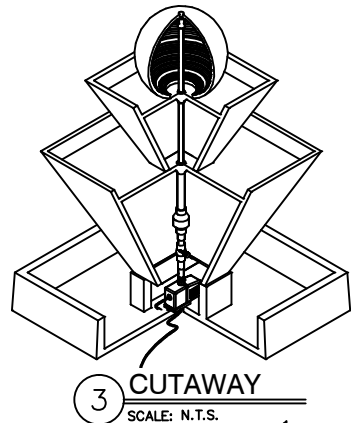
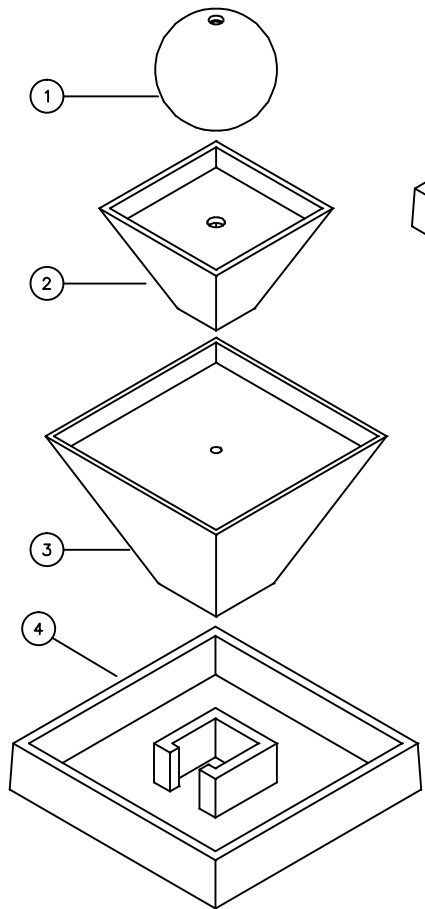
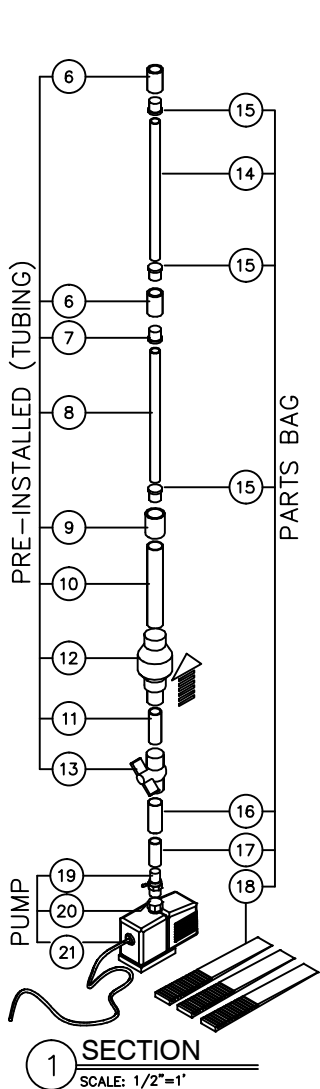


PARTS LIST

ITEM NO	COMPONENT	PART NO.	DESCRIPTION	MANUFACTURER	QTY	REMARKS
1	FOUNTAIN	-	18" DIA BALL - GFRC	GIST	1	COLOR OPTIONAL
2		-	24-3/4"W x 24-3/4"L x 18"D OBLIQUE FTN. (SMALL) GFRC	GIST	1	COLOR OPTIONAL
3		-	26-1/2"W x 26-1/2"L x 35-1/2"D OBLIQUE FTN. (LARGE) GFRC	GIST	1	COLOR OPTIONAL
4		-	42-3/4"W x 42-3/4"L x 18-1/4"D SQUARE BASE - GFRC	GIST	1	COLOR OPTIONAL
6	TUBING	-	3/4" DIA PVC COUPLER SOCKET END	-	2	PRE-INSTALLED
7		-	1/2" x 3/4" DIA PVC CONCENTRIC REDUCER SOCKET END	-	1	PRE-INSTALLED
8		-	1" DIA x 10" LG PVC PIPE PLAIN END	-	1	PRE-INSTALLED
9		-	1" DIA PVC COUPLER SOCKET END	-	1	PRE-INSTALLED
10		-	1" DIA x 10-3/4" LG PVC PIPE PLAIN END	-	1	PRE-INSTALLED
11		-	3/4" DIA x 3" LG CONNECTOR PVC PIPE PLAIN END	-	1	PRE-INSTALLED
12		-	1" DIA NON-RETURN VALVE PVC SCH. 40 200 PSI (CHECK VALVE)	-	1	PRE-INSTALLED
13		-	3/4" DIA BALL VALVE PVC SCH. 40 150 PSI	-	1	PRE-INSTALLED
14	PARTS BAG	A121	5/8" I.D. x 24" LG TUBING - CLEAR VINYL PLAIN END	-	1	
15		A121	1/2" x 3/4" DIA PVC CONCENTRIC REDUCER SOCKET END	-	3	
16		A121	7/8" I.D. x 6" L HOSE TAIL - CLEAR VINYL PLAIN END	-	1	
17		A121	5/8" I.D. x 6" L HOSE TAIL - CLEAR VINYL PLAIN END	-	1	
18		A121	SHIM PLASTIC	EZ - SHIM	8	
19	PUMP	-	1/2" DIA THREADED, SLIP ON DISCHARGE ADAPTER WITH VENTURI	COMMODITY AXIS INC.	1	
20		-	1/2" DIA THREADED DISCHARGE ADAPTER	COMMODITY AXIS INC.	1	
21		-	MODEL 1200 - WP3500,1100 GPH SUBMERSIBLE PUMP	JEBAO	1	OPTIONAL



NOTE:
Electrical supply must conform with local & national regulation/codes. If in doubt consult an electrician.
To ease connections hot water may be used to soften PVC tubing. Pump and plumbing details may vary.
Precautions should be taken to prevent damage from water freezing in reservoir.



DOUBLE OBLIQUE FOUNTAIN WITH BALL

PRODUCT: DOUBLE OBLIQUE WITH BALL
DRAWING DATE: 08-18-05

DRAWING NO: OBDF BALL
SHEET NO. 1 OF 1



COPYRIGHT 2008 GIST DECOR 2012 GIST PRODUCTS ALL RIGHTS RESERVED