



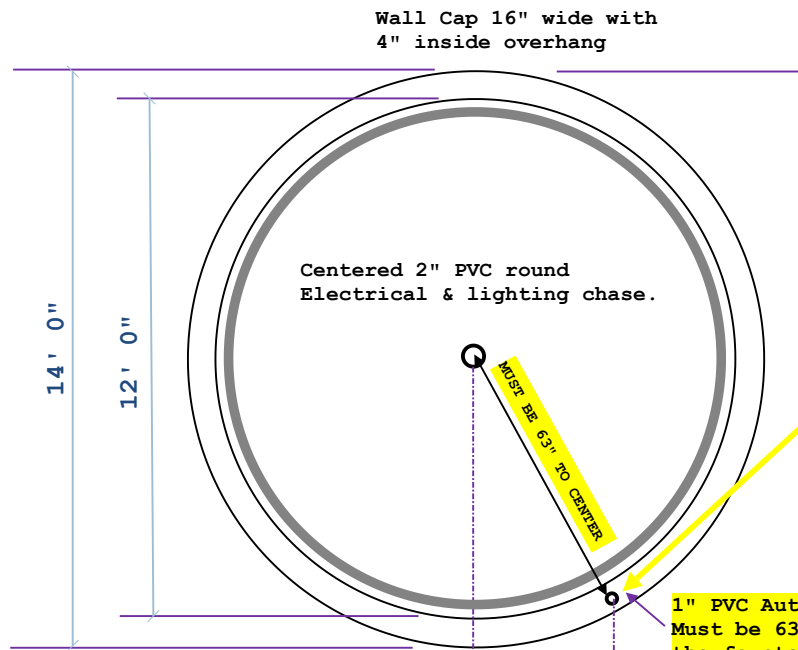
CALL US 941-256-0152

SALES@WATERFEATUREPROS.COM



14 ft Modular Basin with Outside Spray Ring and 3 Center Nozzles.

Site: TBD	Drawing: 2025-201-2-46	Project: 00001416	Drawn: JMF	Notes: WFP Prelim Drawings Only. Not for construction build use.	Water Feature Pros 7750 Fruitville Road Sarasota, FL 34240
Title: Modular Basin Detail with Spray Ring and Nozzles	Scale: 1/4":1'0"	Date: 06/2/2026	Rev: A		

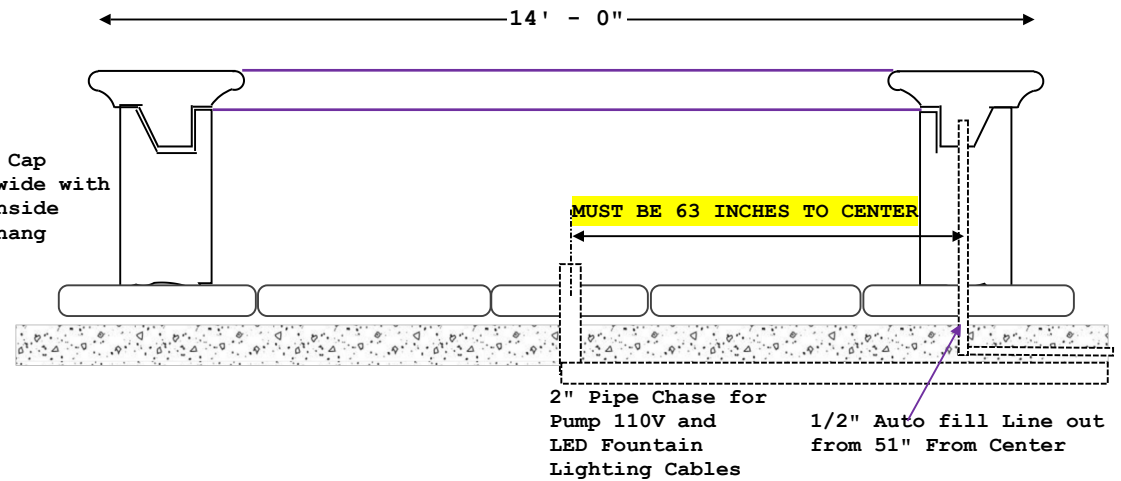


1" PVC AutoFill Supply Must be 63" from center of the fountain 3" pipe

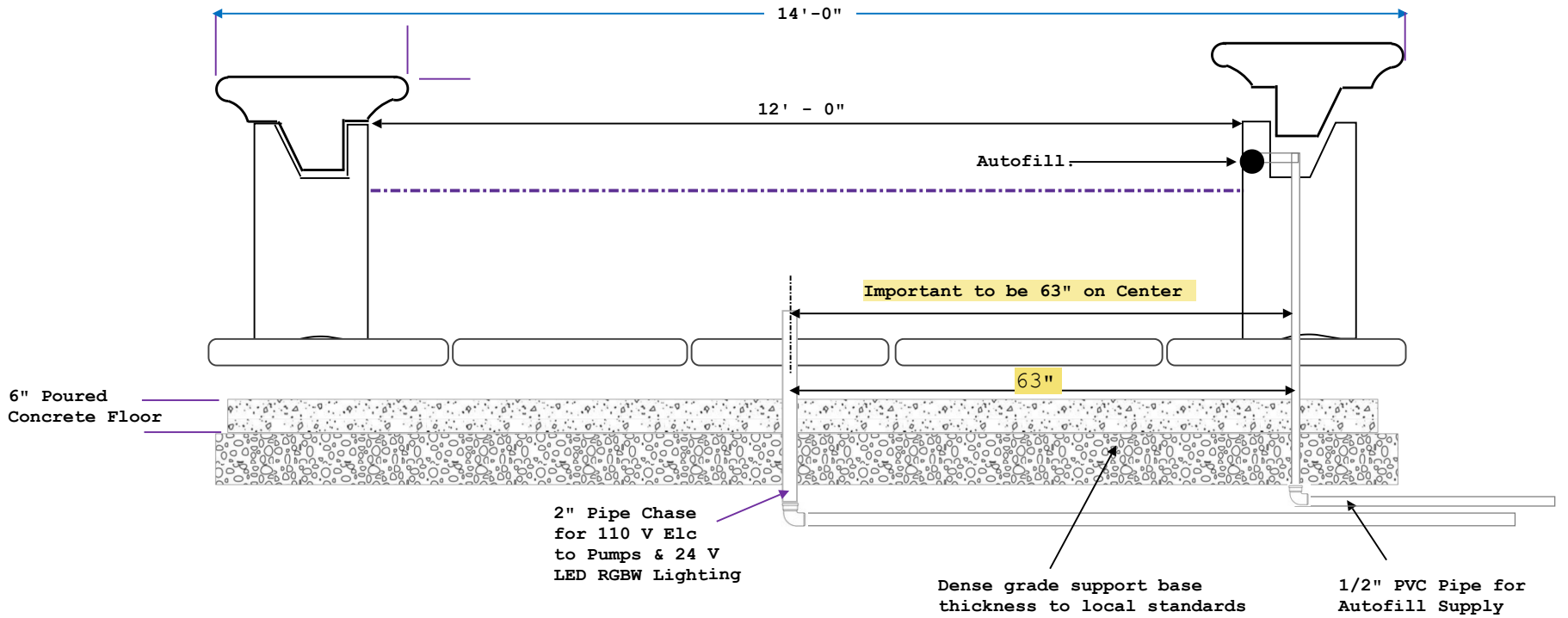
3" Pipe Chase for Pump 110V and LED Fountain Lighting Cables

1/2" PVC AutoFill Supply

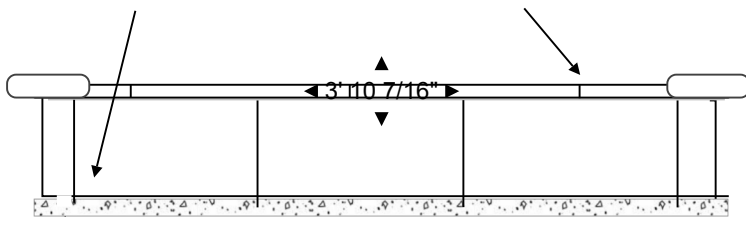
Wall Cap 16" wide with 4" inside overhang



Site: TBD	Drawing: 2026-201-6-18	Project: 0000416	Drawn: JMF	Notes: WFP Prelim Drawings Only. Not for construction build use.	Water Feature Pros 7750 Fruitville Road Sarasota, FL 34240
Title: Modular Basin Plumbing & Autofill Details	Scale: 1/4":1'0"	Date: 06/2/2026	Rev: C		



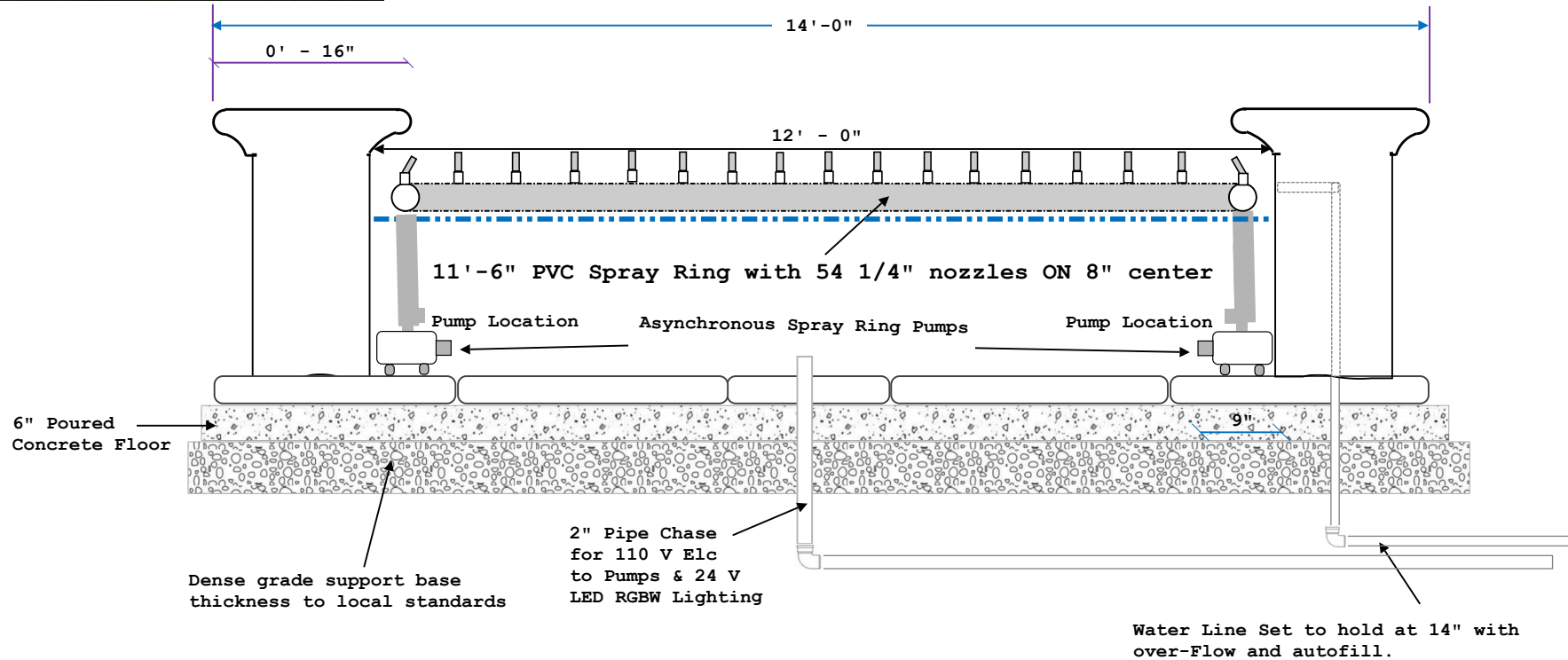
Use hydraulic Sikaflex-1a to seal each joint of the walls and cap.



Site	TBD	Drawing:	2026-201-1-26	Project:	0000416	Drawn:	JMF	Notes: WFP Prelim Drawings Only. Not for construction build use.	Water Feature Pros
Title	Modular Basin Chase, Plumbing & Subgrade Details	Scale:	NTS	Date:	06/2/2026	Rev:	C		7750 Fruitville Road Sarasota, FL 34240



SIDE VIEW
SIDE PLUMBING VIEW
SPRAY RING

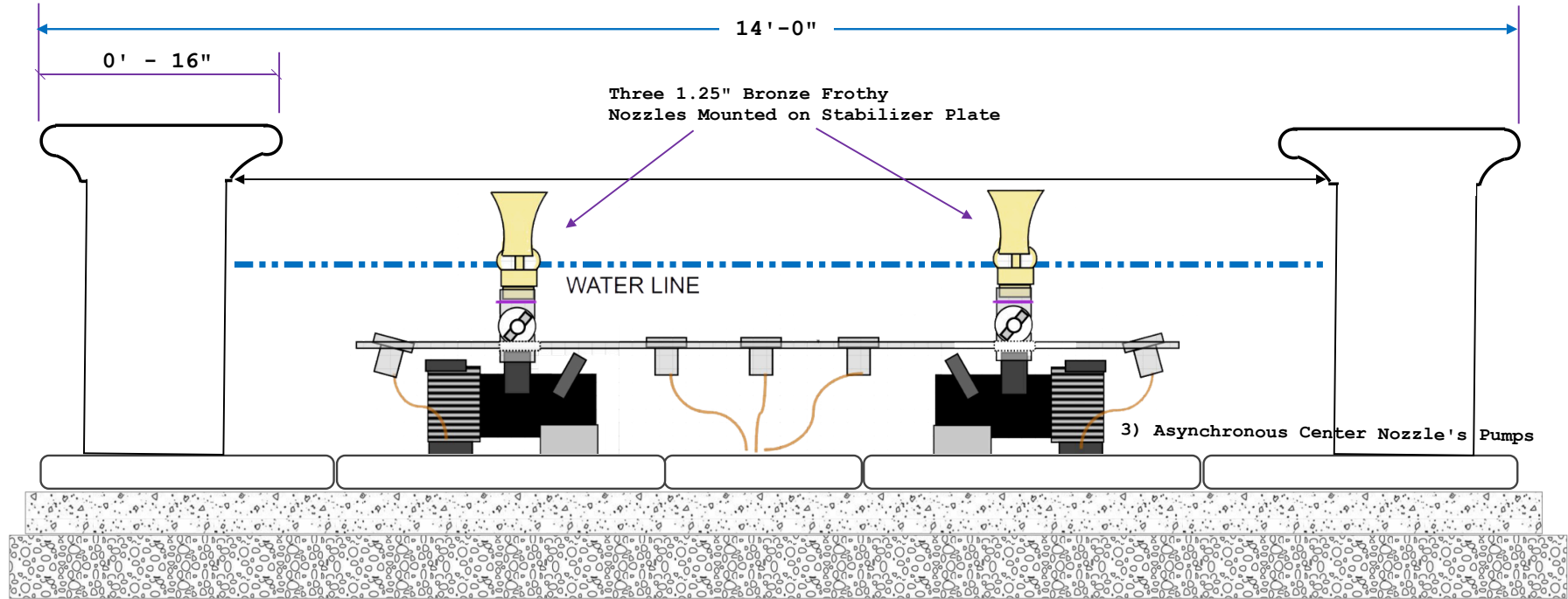


Site	TBD	Drawing:	2026-201-6-20	Project:	0000416	Drawn:	JMF	Notes: WFP Prelim Drawings Only. Not for construction build use.	Water Feature Pros
Title	Modular Basin Spray Ring and Pump Locations	Scale:	NTS	Date:	06/2/2026	Rev:	D		7750 Fruitville Road Sarasota, FL 34240



SIDE VIEW

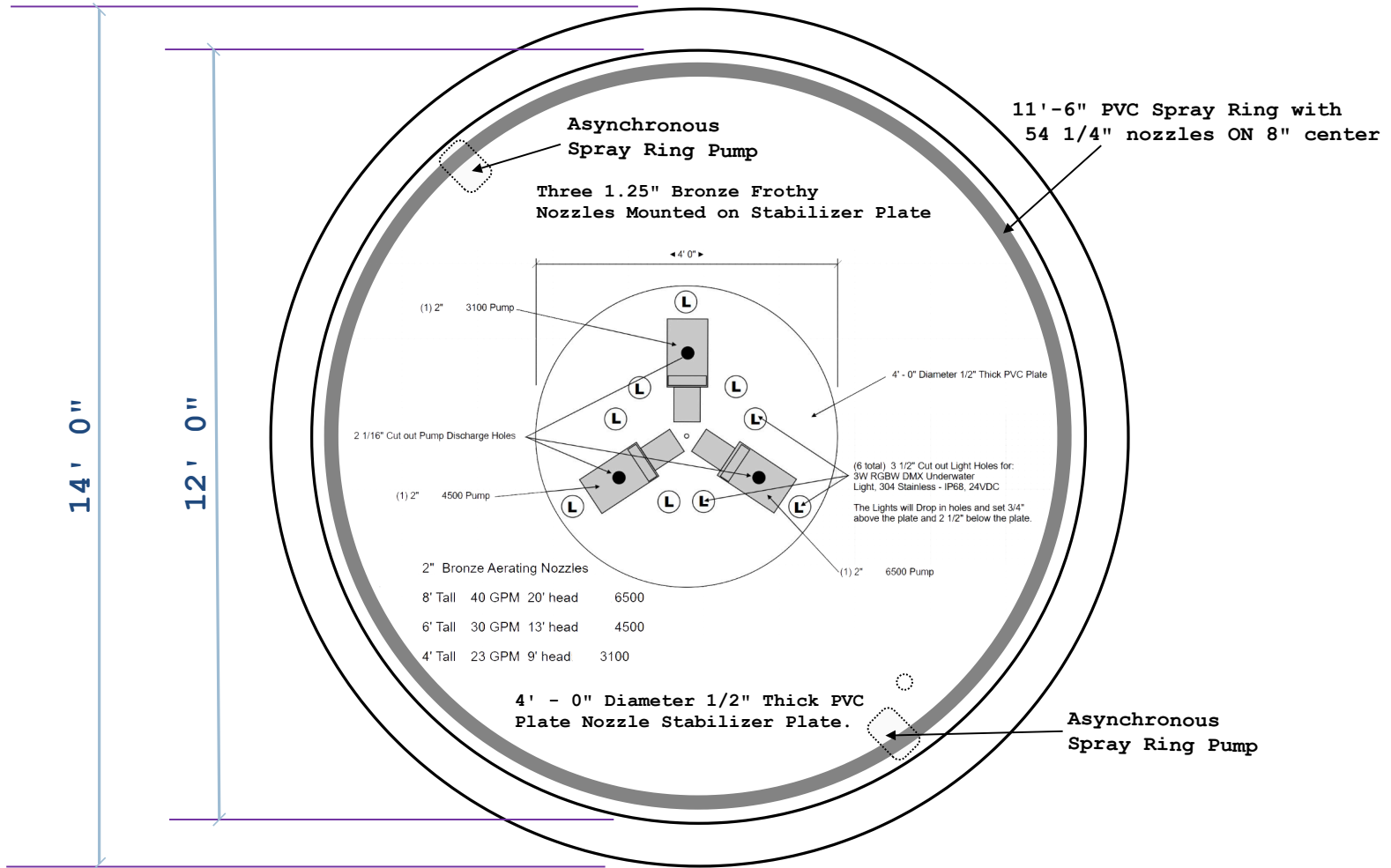
**CENTER NOZZLES AND STABILIZER PLATE
PLUMBING VIEW**



Name:	TBD	Drawing:	2026-201-25	Project:	0000490	Drawn:	jmf	Notes:	Water Feature Pros 7750 Fruitville Rd Sarasota, FL 34240
Cat:	Modular Basin CENTER NOZZLES PLUMBING VIEW	Scale:	1/32:1	Date:	06/2/2026	Rev:	A		

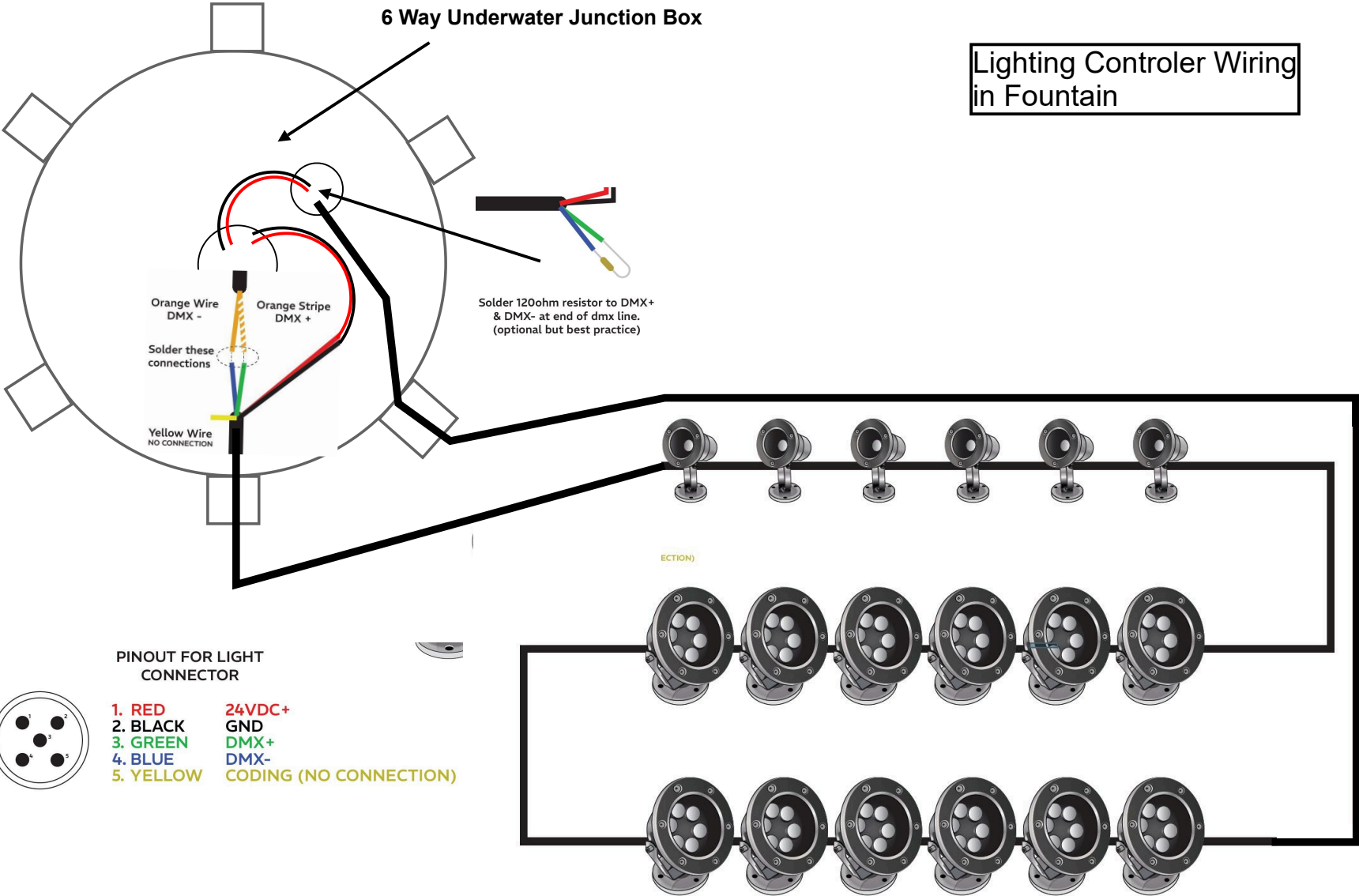
TOP VIEW

SPRAY RING and CENTER NOZZLE PLUMBING VIEW



Name: TBD	Drawing: 2026-201-6-21	Project: 0000490	Drawn: jmf	Notes:	Water Feature Pros 7750 Fruitville Rd Sarasota, FL 34240
Cat: Modular Basin CENTER NOZZLE AND PLUMBING	Scale: 1/32:1	Date: 06/2/2026	Rev: A		

Lighting Controller Wiring in Fountain



Site: **Lighting Controller Wiring in Fountain.**

Drawing: **201- 3-7-26**

Project: **0000416**

Drawn: **JMF**

Notes:

**WATER FEATURE PROS
7750 FRUITVILLE RD
SARASOTA, FL 34240**

Title: **Top View**

Scale: **1/4":1'0"**

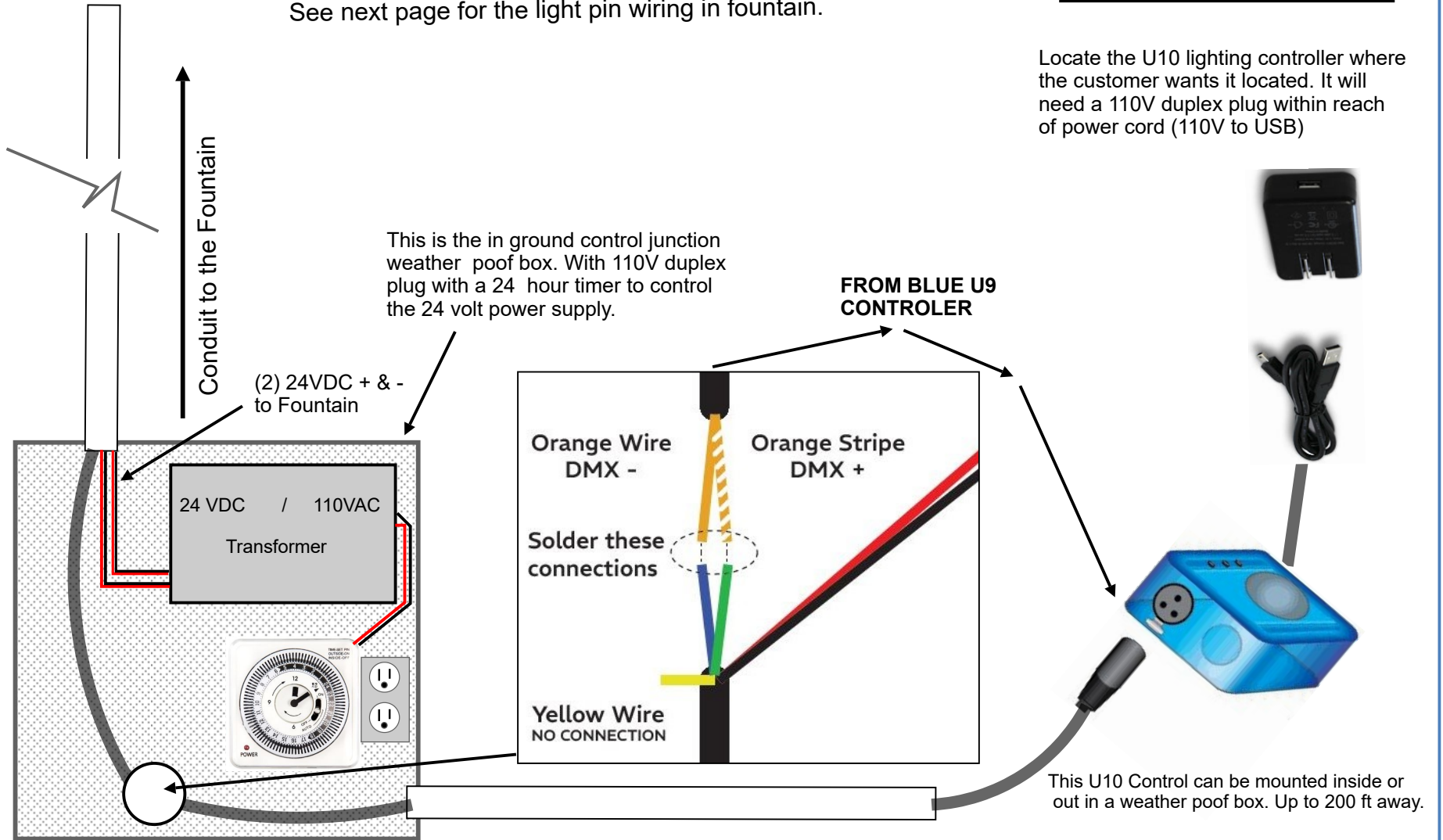
Date: **06/2/2026**

Rev: **A**

Lighting Controller Wiring

See next page for the light pin wiring in fountain.

Locate the U10 lighting controller where the customer wants it located. It will need a 110V duplex plug within reach of power cord (110V to USB)



Site: **Lighting Controler Wiring at In-ground Box.**

Drawing: 201- 3-7-26

Project: 0000416

Drawn: JMF

Notes:

**WATER FEATURE PROS
7750 FRUITVILLE RD
SARASOTA, FL 34240**

Title : **Top View**

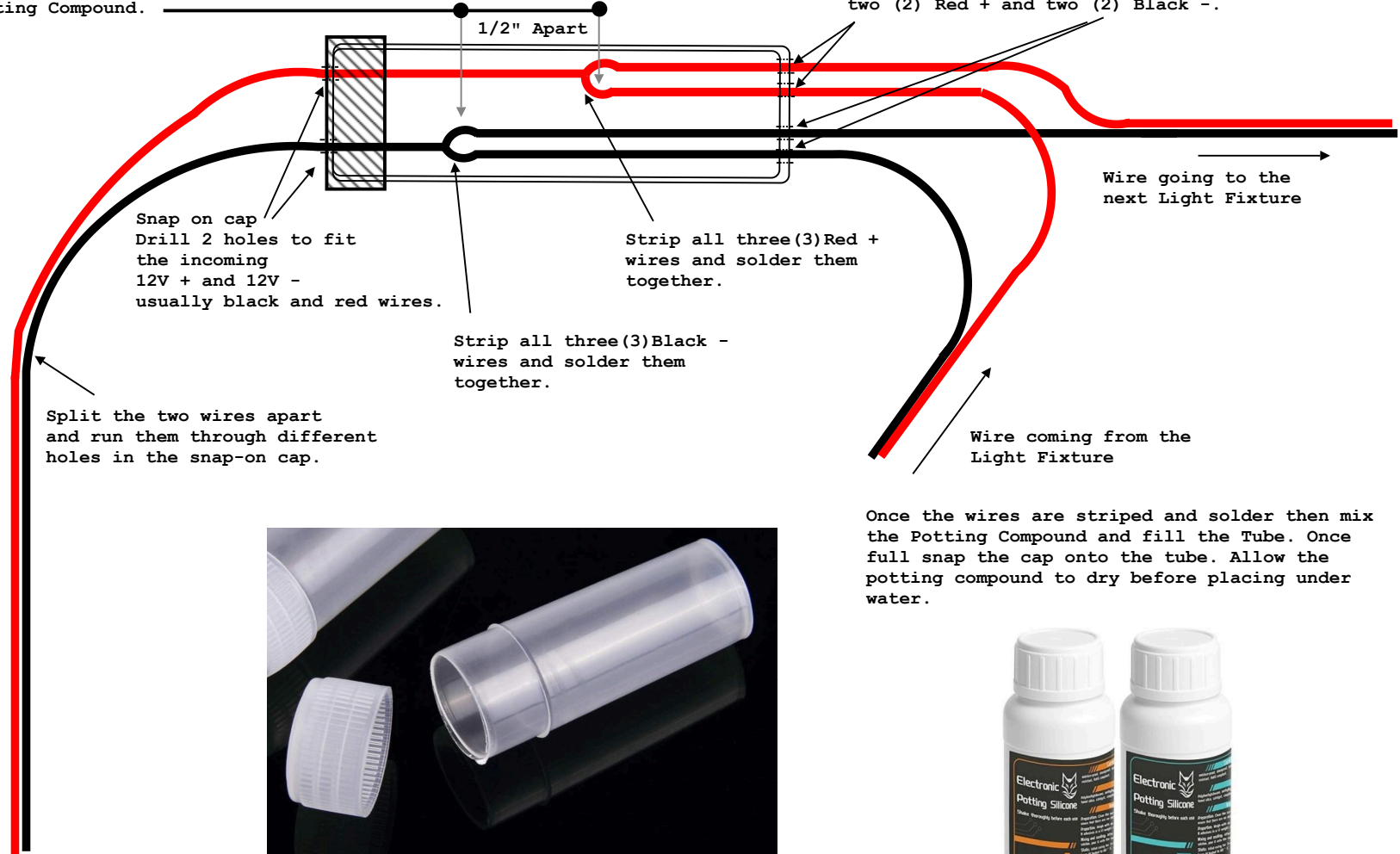
Scale: 1/4" : 1'0"

Date: 06/2/2026

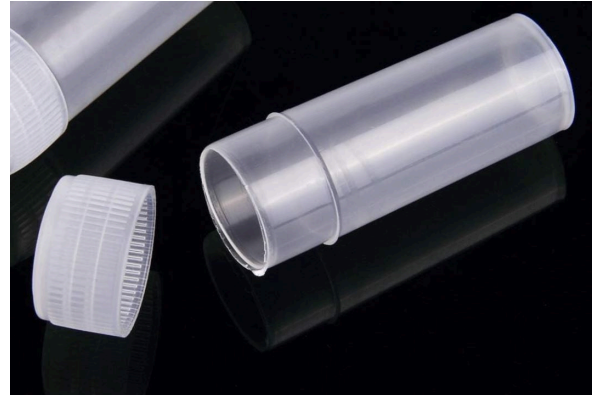
Rev: A

Ensure that the solder connections and joints for the positive wires and negative wires are separated 1/2 inch from each other, placing one at the top of the tube, and one at the bottom before starting to fill with Potting Compound.

Drill four (4) holes in the bottom of the tube each the size of the wire to pass through it. two (2) Red + and two (2) Black -.



Once the wires are striped and solder then mix the Potting Compound and fill the Tube. Once full snap the cap onto the tube. Allow the potting compound to dry before placing under water.



nDora **Modular Basin
Spray Ring and Pump Locations**

Drawing:
2026-201-2

Project:
00001416

Drawn:
JMF

Notes: WFP
Prelim
Drawings
Only. Not for
construction
build use.

Water Feature Pros
7750 Fruitville Road
Sarasota, FL 34240

Title
:
Wiring the connector Tubes

Scale:
NTS

Date:
06/2/2026

Rev:
C

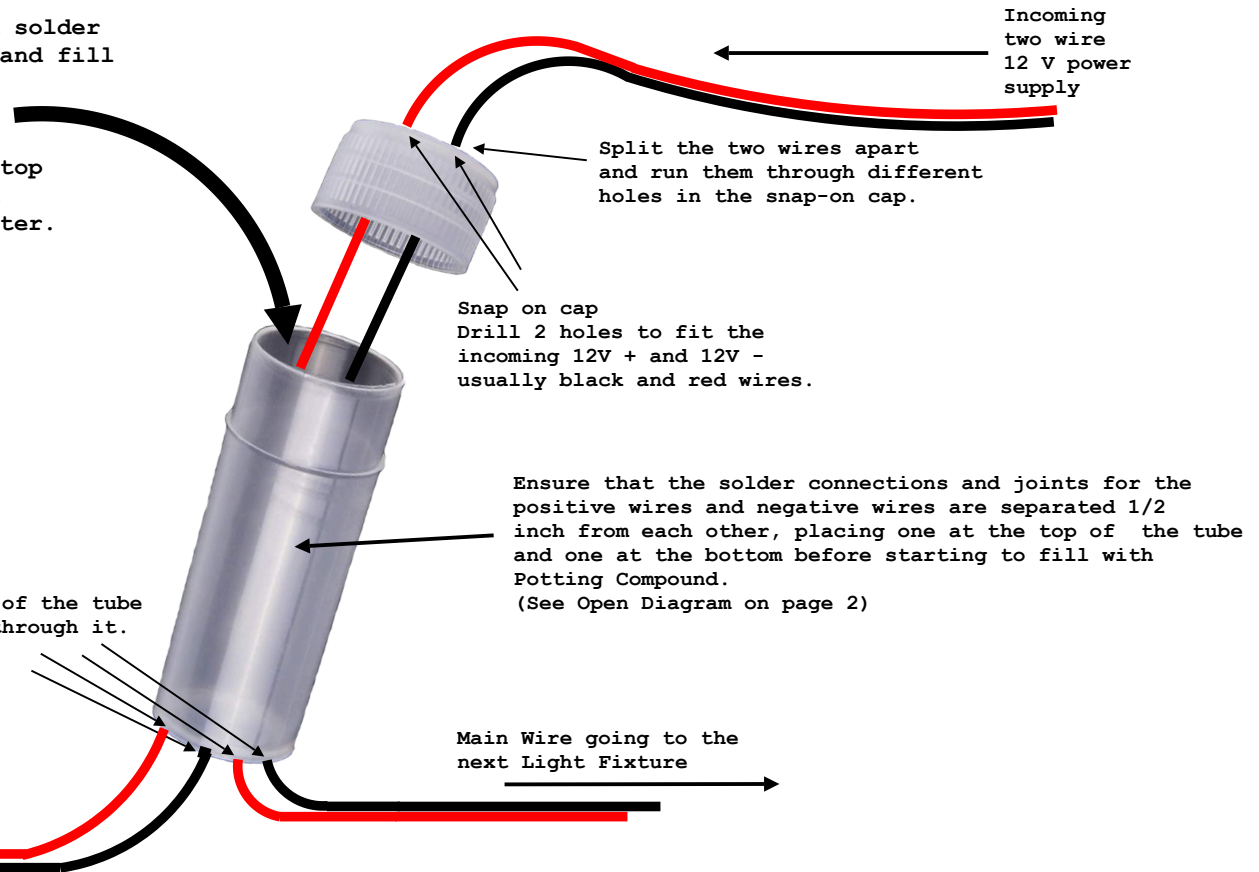
941-256-0152

Once the wires are striped and solder then mix the Potting Compound and fill the Tube to the top.

Once full snap the cap onto the tube. Leave tube standing top up. Allow the potting compound to dry before placing under water.

Drill four (4) holes in the bottom of the tube each the size of the wire to pass through it. two (2) Red + and two (2) Black -.

Wire coming from the Light Fixture



Incoming two wire 12 V power supply

Split the two wires apart and run them through different holes in the snap-on cap.

Snap on cap
Drill 2 holes to fit the incoming 12V + and 12V - usually black and red wires.

Ensure that the solder connections and joints for the positive wires and negative wires are separated 1/2 inch from each other, placing one at the top of the tube and one at the bottom before starting to fill with Potting Compound.
(See Open Diagram on page 2)

Main Wire going to the next Light Fixture

Site: **Modular Basin
Spray Ring and Pump Locations**

Drawing: **2026-201-3**

Project: **00001416**

Drawn: **JMF**

Notes: WFP
Prelim
Drawings
Only. Not for
construction
build use.

**Water Feature Pros
7750 Fruitville Road
Sarasota, FL 34240**

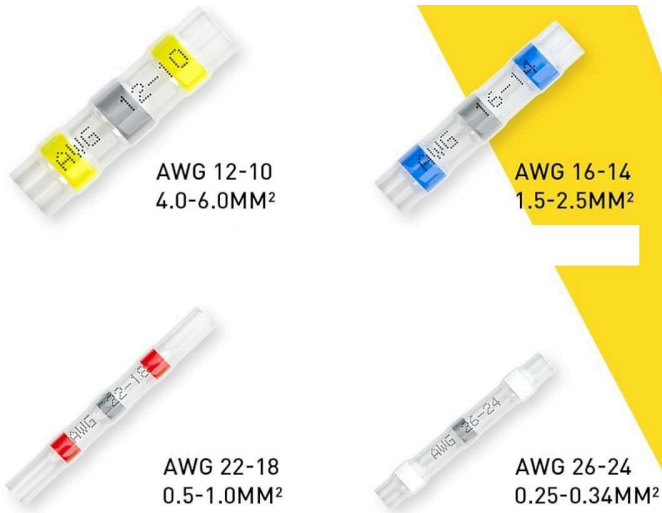
Title: **Filling the connector Tubes with
Potting Compound**

Scale: **NTS**

Date: **06/2/2026**

Rev: **C**

941-256-0152

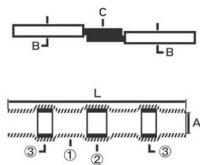


AWG 12-10
4.0-6.0MM²

AWG 16-14
1.5-2.5MM²

AWG 22-18
0.5-1.0MM²

AWG 26-24
0.25-0.34MM²



Work Temperature: -131°F ~ 221°F

Shrinkage Temperature: 176°F

Solder Start Temperature: 280°F

Solder Complete Dissolution Temperature: 320°F

Dielectric Strength: 1KV

Protection Level: IP67

COLOR	PRODUCT DIMENSIONS (MM)		WIRE DIMENSIONS (MM)				CABLE SIZES	
	A(MIN)	L(MIN)	IMAX	B(MIN)	B&C(MAX)	C(MIN)	AWG	MM ²
White	1.7	26	10	1.0	1.7	0.76	26-24	0.25-0.34
Red	2.7	40	10	1.4	2.7	1.2	22-18	0.5-1.0
Green	3.7	40	10	2.0	3.7	1.5	18-16	1.0-1.5
Blue	4.5	40	10	2.3	4.5	2.0	16-14	1.5-2.5
Yellow	6.0	40	10	3.7	6.0	2.8	12-10	4.0-6.0



Step 1:

Make sure the wires are clean of grease or oil.

Step 2:

Then Strip each wire.



Step 3:

Twist the copper wires together and insert into the connector until the twisted wires are under the silver center part of the connector.



Step 4:

To achieve a quality watertight connection, use a heat gun and gently turn it while using it set to 1800W = between 842degs F 950degs F

Note:
Do Not Use Crimp Tools On These Connectors!

Follow These Instructions

Note:

Use of a Lighter to melt the connector will make the connection non-waterproof!

Site: **1 Tier Fountain In Basin**

Drawing: **2022-201-4**

Project: **00001416**

Drawn: **JMF**

Notes: WFP
Prelim
Drawings
Only. Not for
construction
build use.

Water Feature Pros
7750 Fruitville Road
Sarasota, FL 34240

Title: **Using the Heat Gun Connectors**

Scale: **NTS**

Date: **03/23/2022**

Rev: **C**

941-256-0152